

**carspector**Auto gecheckt,
sicher gekauft.

Vehicle Data and Inspection Conditions

Client	Inspector	Date
M. Hoffmann	Carspector / W.	15.03.2025

Inspection Conditions

Weather conditions	Good
Lighting conditions	Bright
Vehicle clean/dirty	Dusty
Vehicle freely accessible	Yes

Vehicle Information

Manufacturer	Audi	VIN	SAMPLE
Model	A6	Type	Wagon
Transmission	Automatic	First Registration	03/22
Fuel	Diesel	Color	Black
Engine	1.968 cm ³	No. Doors	4/5
Power	120 kW (163 hp)	Next HU	10/26
Mileage	36.326 km	Emission class	Euro 6 - Green badge



carspector

Auto gecheckt,
sicher gekauft.

Standard Equipment:

Non-smoking package, door sills with aluminum inlay, aspherical exterior mirror, right, aspherical exterior mirror, left, exterior mirror body color, black roof rails, LED headlights, LED indicators integrated in exterior mirrors, LED taillights, LED daytime running lights, heated windshield washer nozzles, bumper version: Basic, heat-insulating glazing (side/rear), windshield heat-insulating glazing, digital radio reception (DAB), Audi connect (Internet-based services), Audi connect (emergency call and assistance system), multi-media interface MMI Basic Plus / MMI Radio Plus, multi-media interface MMI navigation, driver information system (FIS) with color display, tire monitoring display, interior equipment: decorative inlays fine paint, speed limiter system, driver/passenger side airbag, head airbag system (sideguard), passenger side airbag can be switched off, front center armrest, rail system in the luggage compartment, seat cover / Upholstery: fabric effect, front seats manually adjustable, rear seat backrest split/foldable (40:20:40), rear seat system (3 seats), tailgate opening automatically, central locking / keyless-go starting system, electric luggage compartment lid. operated (open + close), driving assistance system: occupant protection system (Audi pre sense basic), immobilizer (electronic), controls in matt black, Isofix mounts for child seat, jack, anti-lock braking system (ABS), standard chassis, Audi Drive Select, driving assistance system: lane departure warning, LM rims 7.5x17 (10 spokes), tire repair kit, Steering column (steering wheel) mech. Height/longitudinal adjustment, progressive steering, electronics. Stability program (ESP), drive type: front-wheel drive, SCR system (AdBlue technology), low-emission emission standard Euro 6d, start/stop system, soot particle filter, mild hybrid technology, body: 4-door, transmission 7-speed - dual clutch transmission S-tronic, mild hybrid 120 kW (engine 2.0 liter - 120 kW 16V TDI)

Optional Equipment:

Sun blinds on the rear door windows, side airbags front and rear, digital instrument cluster (virtual cockpit plus), fuel tank: 73 liters, lumbar supports at the front, electric. adjustable, auxiliary heating, rear view camera, sound system DSP / Audi sound system, Isofix mounts for child seat on front passenger seat, business package, roof lining fabric, black, storage package, darkened rear glazing (privacy glazing) and front door windows acoustic glass, LM rims 7, 5x17 (10-spoke design, for winter tires), city assistance package, Ambient lighting, trailer hitch preparation, heated steering wheel (leather) with multifunction and switching function, urea tank (SCR): 24 liters, Audi smartphone interface, metallic paint, driving assistance system: traffic sign recognition

**carspector**Auto gecheckt,
sicher gekauft.

Quick overview

- = Good
- = Caution
- = Poor

Category	Condition	Remarks
Documents	●	
Tires	●	
Paint Condition	●	Repaint / Body repair present
Bodywork	●	Stone chip / Dent present
Components	●	A/C compressor defective
Lighting	●	
Engine Condition	●	
Test Run / Drive	●	
Interior condition	●	Strong smell of smoke noticeable
Miscellaneous	-	

Further details on the respective categories are explained below.



carspector

Auto gecheckt,
sicher gekauft.

Vehicle documents

Approvals	-
Vehicle registration	●
Vehicle Title	●
Owner's Manual	●
Technical Inspection Report (HU/AU)	Unavailable
Service Booklet	Digital
Service Booklet Maintained?	●
Other Abnormalities	-

**carspector**Auto gecheckt,
sicher gekauft.

Vehicle tires

Tires (mounted)

Position	Brand	Type	Size	Profile in mm
FL	Continental	Summer	225 / 60 R 17	● 4
FR	Continental	Summer	225 / 60 R 17	● 4
BL	Continental	Summer	225 / 60 R 17	● 6
BR	Continental	Summer	225 / 60 R 17	● 6
Spare Wheel	-			

Additional tires (if available)

Position	Brand	Type	Size	Profile in mm
FL	Nexen	Winter	215 / 55 R 16	● 6
FR	Nexen	Winter	215 / 55 R 16	● 6
BL	Nexen	Winter	215 / 55 R 16	● 7
BR	Nexen	Winter	215 / 55 R 16	● 7

Other Abnormalities	● Tire patch kit
---------------------	------------------

**carspector**Auto gecheckt,
sicher gekauft.

Condition of Paint and Bodywork

Paint Condition

Component	Paint layer thickness in μm	Repainted?	Condition
Hood	126	No	● Stone chip
Fender FR	131	No	●
Fender FL	137	No	●
Door FL	● 425	Yes	●
Door BL	● 383	Yes	●
Door FR	123	No	●
Door BR	137	No	●
Sidewall BL	● 415	Yes	● Dent in the upper area
Sidewall BR	128	No	●
Roof	126	No	●
Tailgate	117	No	●

Other Abnormalities	-
---------------------	---

Vehicle Body Condition

Front bumper	● Scratches on the left side
Rear bumper	● Scratches on the left side
Grill	●
Left sill	●
Right sill	●
Panel Gaps	●



carspector

Auto gecheckt,
sicher gekauft.

Vehicle Lighting

Headlight	●
Tail Lights	●
Brake Lights	●
Reversing Lights	●
Turn Signals	●
Hazard Lights	●
Fog Lights	●
Low Beams	●
Interior Lighting	●
Daytime Running Lights	●
Other Abnormalities	-

**carspector**Auto gecheckt,
sicher gekauft.

Condition of Components and Attachments

Vehicle condition Outside

Front Windshield	● Minor stone chip (outside driver's field of vision)
Windows/Glazing	●
Windshield Wipers	●
Wheels/Rims	●
Seals	●
Central Locking System	●
Attachments	●
Exterior Mirrors	● Minor stone chip

Condition of Components

Suspension	●
Shock Absorbers	●
Springs	●
Brake Discs & Pads	● Front brake pads: wear limit reached
Exhaust System	●
Engine Oil Tightness	●
Transmission Oil Tightness	●
Differential Oil Tightness	●
General Undercarriage Condition	●
Other Abnormalities	● Light surface rust on brake components (due to storage time)



carspector

Auto gecheckt,
sicher gekauft.

Condition of Engine and Test Run

Engine Bay Condition

Engine Oil	● Changed 11/24
Brake Fluid	● Changed 02/25
Coolant	● Changed 02/25
General Engine Compartment Condition	●

Inspections and Oil Changes

Next Inspection	● 10/26
Next Oil Change	● 10/26

Test Run Condition

Starter Motor	●
Clutch	-
Engine running condition	●
Unusual noises	-
Timing chain / belt	●
Other Abnormalities	-



carspector

Auto gecheckt,
sicher gekauft.

Test drive

Test drive	Performed
------------	-----------

Engine Running	●
Steering	●
Clutch	-
Transmission	●
Odometer / Speedometer	●
Braking Performance	●
Unusual Noises	-

Other Abnormalities	Engine and transmission operate smoothly with no noticeable irregularities.
---------------------	---



carspector

Auto gecheckt,
sicher gekauft.

Interior Condition

Seat Belts	●
Steering Wheel	●
Dashboard	●
Air Conditioning	● Not functioning – A/C compressor defective
Heating / Ventilation	●
Sunroof	-
Controls	●
Window Lifters	●
Rearview Mirror	●
Seats	●
Glove Compartment	●
Radio	●
Floor	●
Trim	●
Headliner	●
Horn	●
Odor	● Strong smoke odor present
Other Abnormalities	-



carspector

Auto gecheckt,
sicher gekauft.

Other Remarks

Errors in Instrument Cluster	● No errors
Diagnostic Tool	● No errors
Known Accident Damage	● Left side
Repainted Areas	● Left side (door VL, door HL, side panel HL) Reason: Scraped against a wall in a parking garage
Other Abnormalities	-



carspector

Auto gecheckt,
sicher gekauft.

Inspector's Summary

Apart from some scratches on the bumpers, stone chips on the hood, and a dent on the left D-pillar, the vehicle is overall in well-maintained condition and can be rated as good. According to the seller, the dent on the D-pillar is scheduled to be professionally repaired.

The vehicle comes with two complete sets of tires (summer and winter), all of which have good tread depth.

During the inspection, repainted areas were found on almost the entire left side of the vehicle. This observation was later confirmed via a VIN check and the included repair documentation. The cause was a documented minor collision with a wall in a parking garage. Affected areas include the driver's door (left front), the left rear door, and the left rear quarter panel. The quarter panel also shows a visible dent in its upper section.

Other cosmetic flaws include stone chips on the hood, the windshield (outside the driver's field of vision), and the exterior mirrors. There are also scratches on the front and rear bumpers on the left side.

From a technical standpoint, the vehicle shows no issues. The test drive revealed no defects. All maintenance and inspections have been carried out recently, and the vehicle's inspection certificate (TÜV) remains valid for approximately 1.5 more years.

The A/C compressor is currently defective, but this is covered under the manufacturer's warranty. The vehicle still benefits from an active Audi factory warranty with approximately three years remaining.

Inside the vehicle, there is a strong smell of smoke, which is unlikely to be fully removed, even with ozone treatment.

Buy Recommendation

Buy Recommendation



Important: The condition report was prepared by the expert to the best of their knowledge and belief at the time of inspection, based on the circumstances and means available. This report does not constitute any liability on the part of the inspector, nor does it include any warranty or guarantee for either the buyer or the seller. Components or assemblies not explicitly mentioned were not assessed as part of this inspection. The evaluation was conducted without disassembly or removal of any parts. Due to the nature of a visual and functional inspection including a test run, it is not possible to simulate all conceivable load and operating conditions. Therefore, not all potential defects can be detected within the scope of this assessment, as the findings may also be affected by prevailing weather and inspection conditions.



carspector

Auto gecheckt,
sicher gekauft.

Vehicle overview

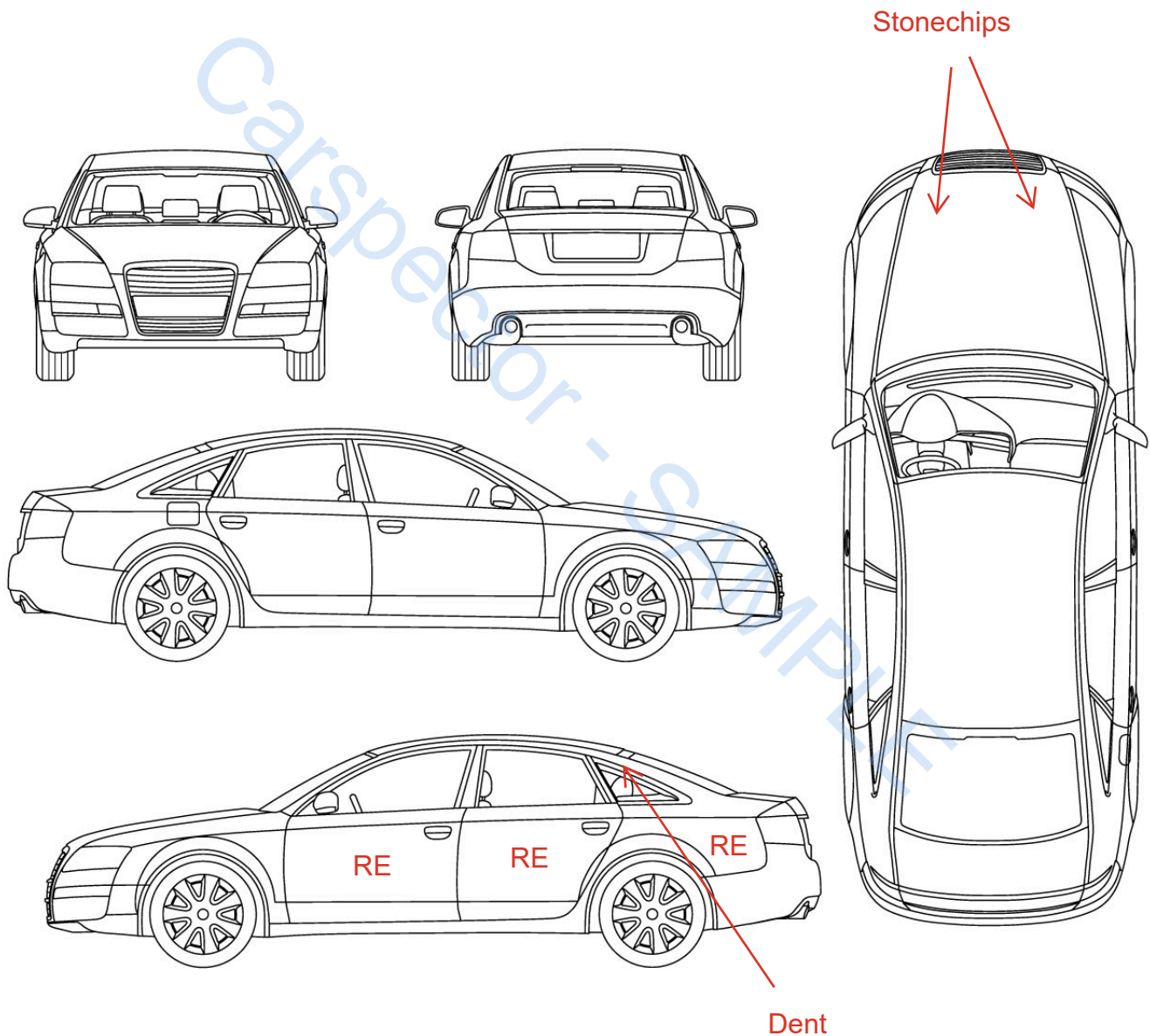
S = Scratch

D = Dent

DA = Damage

R = Rust

RE = Repaint



Valuation Overview (Depreciation, Added Value, Upcoming Costs, Market Value)

Depreciation (Deductions)

Component	Remarks	Deduction
Hood	Stone chips	250,00 €
Door FL, Door BL, Sidewall BL	Repair / Repaint	1.200,00 €
Sidewall BL	Dent	300,00 €
Front and rear bumper (left side)	Scratches	410,00 €
Interior	Smoke odor	500,00 €
Total depreciation		2.660,00 €

Added Value (Enhancements)

Component	Remarks	Added Value
-		
Total added value		0,00 €

Upcoming Costs

Component	Remarks	Repair Cost
Left & right mirrors	Stone chip / minor damage	150,00 €
A/C compressor	Defective – covered in warranty	0,00 €
Interior smoke odor	Ozone treatment	250,00 €
Sidewall BL	Dent removal	300,00 €
Front brake pads	Wear limit reached – replacement required	275,00 €
Total upcoming cost		975,00 €

All values include VAT. The stated repair costs are estimates and may vary slightly.

**carspector**Auto gecheckt,
sicher gekauft.

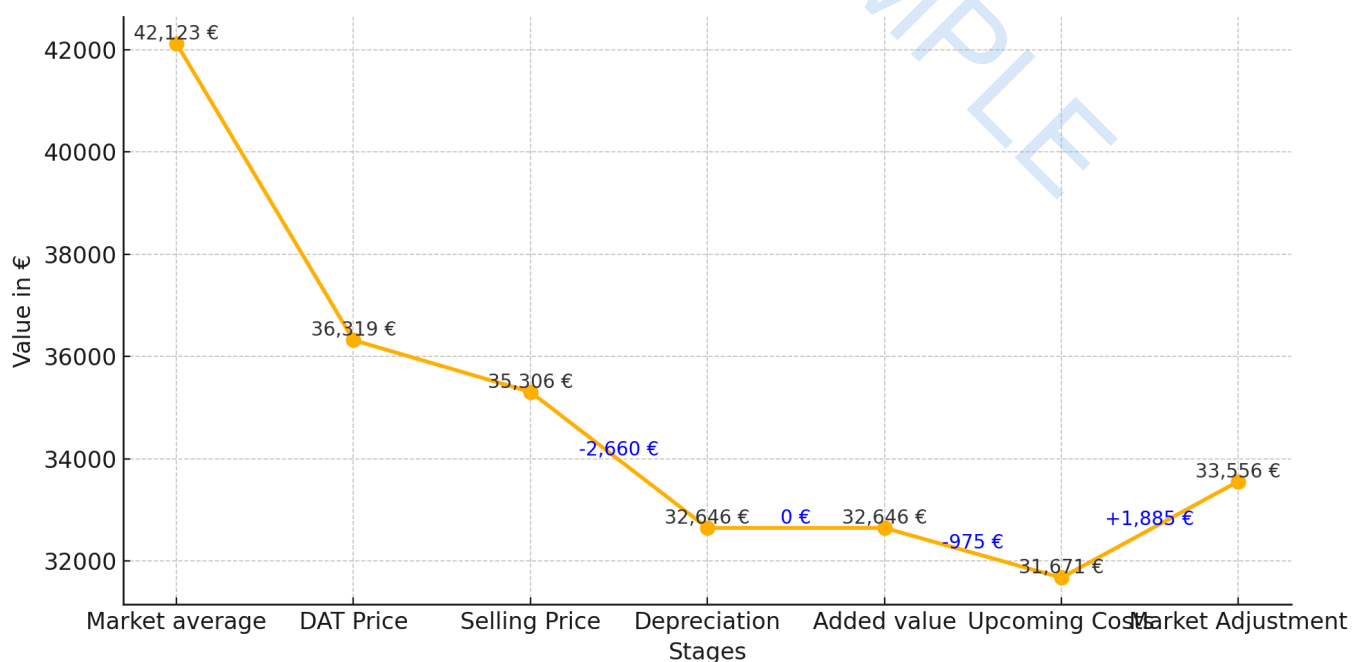
Vehicle Valuation

Description	Amount
Market average	42.123 €
DAT Price	36.319 €
Selling Price	35.306 €
Depreciation	- 2.660 €
Added value	+ 0,00 €
Upcoming Costs	- 975 €
Market Adjustment	+ 1.885 €

Final Market Value	33.556 €
---------------------------	-----------------

The determined vehicle values take into account the date of first registration, mileage, general condition, and any damage exceeding normal wear and tear. In addition, the current market situation is reflected in the valuation.

Graphical Representation



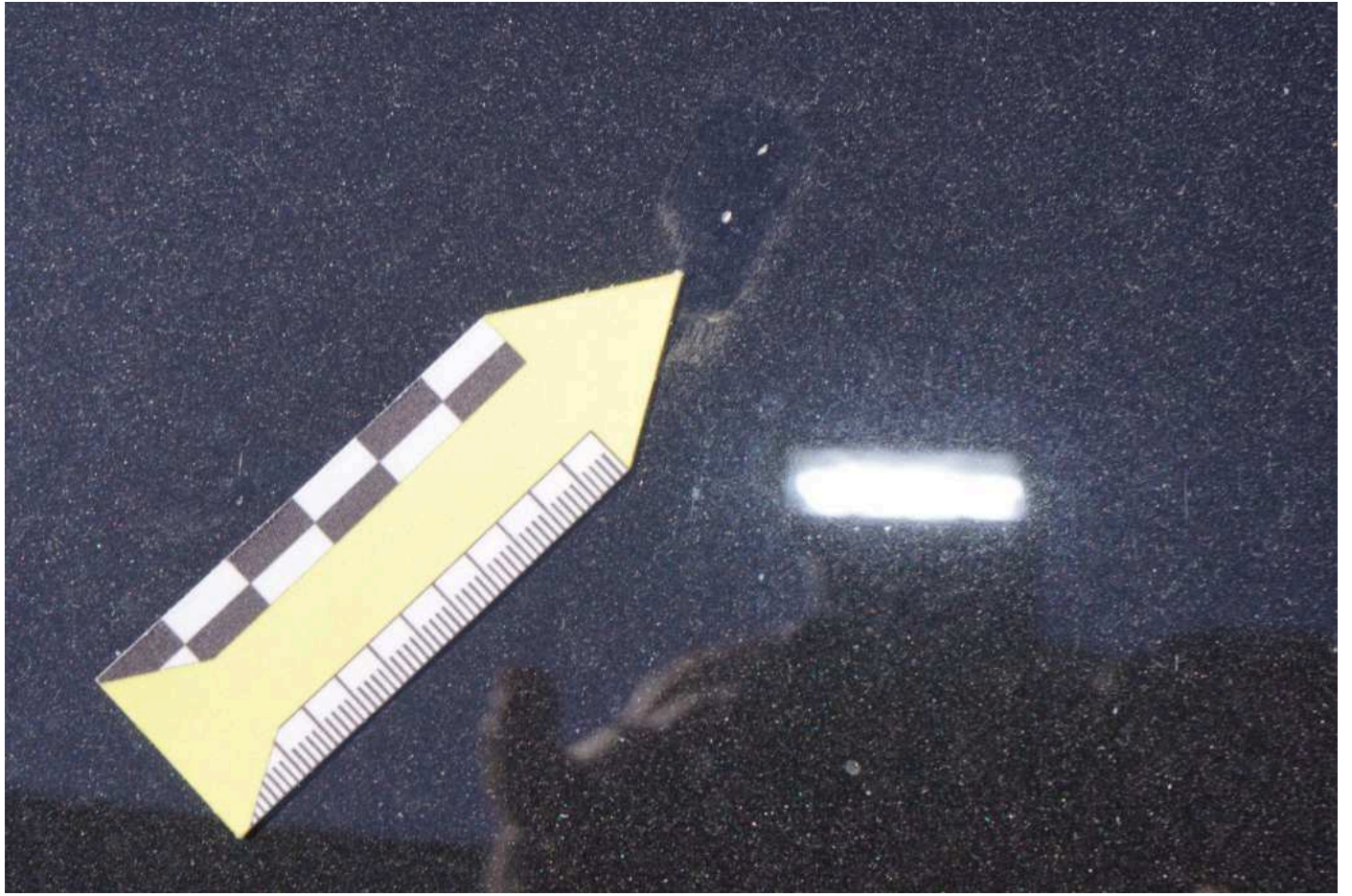


















Rear-left bumper



